

DISCOVER DISTRIBUTION CENTER SOLUTIONS DESIGNED FOR PRODUCTIVITY

Explore our product and offering
best seller solution catalog

START THE JOURNEY

Honeywell



BEST SELLER INSIGHTS. COMPREHENSIVE SOLUTIONS.

To better understand your operation’s needs and the ways in which Honeywell products can best meet them, we looked to VDC’s industry research among warehouse professionals. This helped us determine the “best seller insights” and product recommendations to address your challenging needs.

According to VDC research, 56 percent of warehouse professionals plan to upgrade their existing fleet of mobile devices because:

- They are nearing their end of life/have outdated technology (i.e., an end of Windows embedded 6.5 or older android ver sion)
- They need to upgrade to more visual modern user interfaces

Honeywell’s answer to these pressing issues? Best sellers like the CK65 mobile computer (page 3) and VM1A vehicle mount computer (page 5), which are based on Android R (Android 11) extended life cycle Operating System (OS) support with modern interfaces.

Moreover, research shows that 53 percent of IT decision-makers view their mobility deployments as immature or outdated.

Honeywell answers this point by providing easy and accelerated deployments across 1000s of devices with common system-on-module—a unique feat with Mobility Edge unified platform. With easy and accelerated deployments, IT decision-makers don’t have to worry about their devices becoming outdated with security vulnerabilities.

We also discovered that speed is critical: warehouse professionals are actively pursuing solutions that can help speed fulfillment and reverse logistics. Honeywell embedded and stand alone scanners have best-in-class motion tolerance, extended working range and a wider field of view, making them the ideal choice for warehouses, DCs and T&L businesses.

FIND OUT MORE ABOUT HOW YOU CAN MAKE OUR SOLUTIONS WORK FOR YOU IN THE PAGES BELOW.





MOBILE SOLUTIONS FOR MOBILE WORKERS.

Honeywell's handheld computers combine the advantages of consumer devices and high-end industrial mobile computers into a single rugged package. Our mobile computers are built to withstand the harshest environments and are small and lightweight. The devices have power management advantages, ensuring that batteries will last up to two full shifts for those running on Mobility Edge. For mobile workers in the DC or warehouse, battery life is crucial because every second lost to swapping devices that need recharging represents a lost productivity.



**ERROR-PROOF YOUR WAREHOUSE WITH THE INDUSTRY'S MOST ADVANCED
ULTRA-RUGGED MOBILE DEVICES READY FOR THE TOUGHEST ENVIRONMENTS.**



CK65

WHAT IT IS

Built on the Mobility Edge platform, the CK65 minimizes total cost of ownership like no other product on the market by future-proofing your investment with support through Android R (Android 11). Its ultra-rugged design can withstand 3-m (10 ft) drops to concrete; as well as being rated to IP65 and IP68, the CK65 is durable in even the toughest DC environments. The CK65 even offers cold storage models for freezer environments and non-incendive (NI)/ATEX models for areas with hazardous gases. It features 6803 scanner with dual lens capturing near, mid/far range with no moving parts.

KEY SPECIFICATIONS

- **IP Rating: IP65/68**
- **Drop spec: 2.4 m (8 ft) to concrete across temperature range per MIL-STD 810G**
- **Tumble Spec: 3 m (10 ft) tumbles per IEC 60068-2-32 specification**

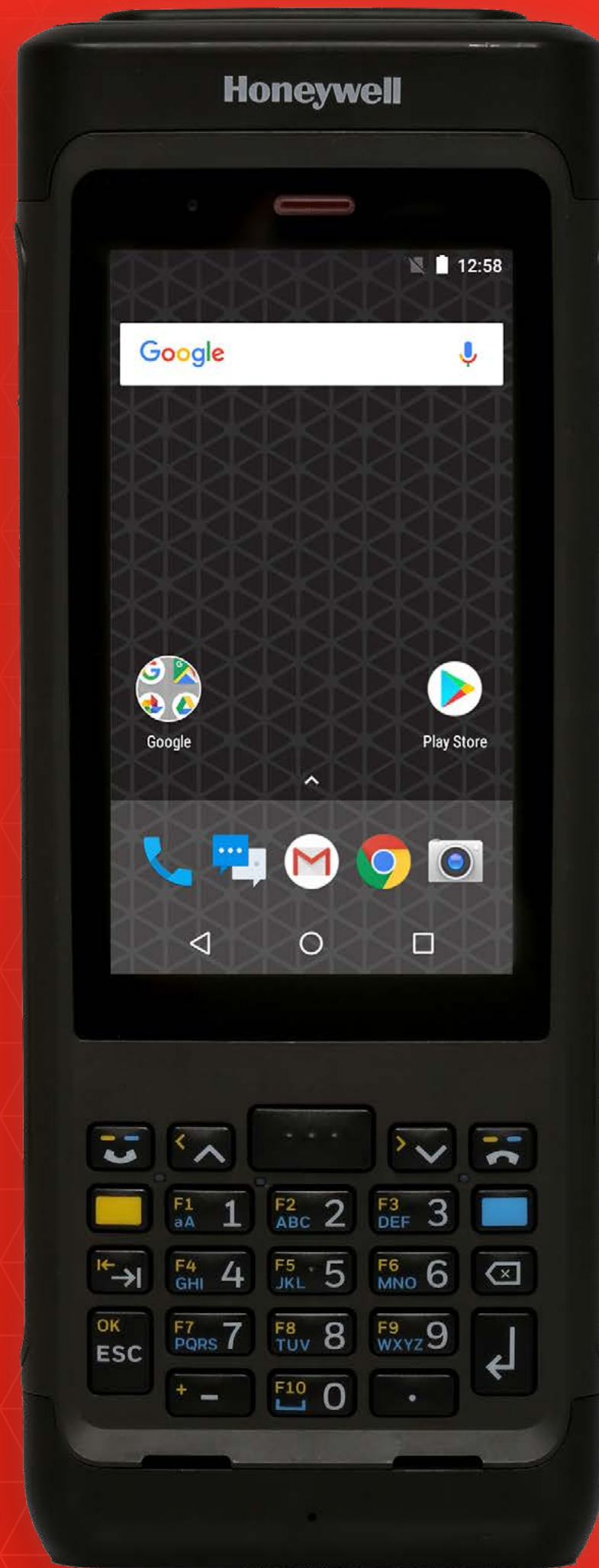
HOW IT WORKS

- Helps accelerate and error-proof work in distribution centers and warehouses while providing an easy path for users migrating from legacy Windows operating systems to Android
- Designed for tough warehouse and manufacturing environments, with an ultra-rugged design that survives multiple up to 3 m (10 ft) drops to concrete over the full temperature range and an IP65/68 rating against dust and rain
- With 28 hours (7000 mAh) of battery life in a typical use case, the CK65 mobile computer supports three shifts on one charge
- The powerful Qualcomm 660 processor, integrated keyboard and 2x2 MIMO WLAN communications keep workers connected and productive
- Software Client Pack and Device Client Pack included for easy deployment, security and productivity with prelicensed software including Enterprise Browser, Launcher, Smart Terminal Emulation with built-in session persistence and more

Weight: 498 g (17.6 oz) with battery pack

Display: 10.16 cm (4-inch) 480 x 800 bright color LCD with backlight outdoor readable, optically bonded to touch panel

OS: Android 8.0 Oreo (system compatible up to Android R or 11) standard, far and fullrange imagers that minimize wasted scan time



CN80

WHAT IT IS

Whether you're transitioning to touchscreen capabilities or you're key-dependent due to the nature of your business, the Honeywell CN80 handheld computer can help you improve the speed and accuracy of operations while positioning you for the future. Built on the Mobility Edge™ platform, this Android compatible handheld computer features full-touch capabilities plus real keys for fast data entry at high transaction rates even in severe settings. The CN80 is also an Android Enterprise Recommended device, meaning it's rugged, built to deploy easily in the field, and built to stay up-to-date over a long life span.

KEY SPECIFICATIONS

- **IP Rating: IP65/IP67**
- **Drop spec: 2.4 m to concrete at room temperature per MIL-STD 810G**
- **Tumble Spec: Exceeds 2,000 1.0 m tumbles per IEC 60068-2-32 specification**

HOW IT WORKS

- Ultra-rugged construction withstands multiple 2.4 m drops to concrete and 2,000 1.0 m tumbles
- IP65/IP67 ratings against dust/water and Cold Storage option support operation where other products can't be used
- Built on Mobility Edge, a common hardware platform with enterprise life cycle tools
- Support for five Android generations starting with Android N Validated Android Enterprise. Recommended by Google
- The powerful Qualcomm 660 processor, integrated keyboard and 2x2 MIMO WLAN communications keep workers connected and productive
- Software Client Pack and Device Client Pack included for easy deployment, security and productivity with prelicensed software including Enterprise Browser,
- Launcher, Smart Terminal Emulation with built-in session persistence and more

Weight: 500 g–550 g

Display: 4.2-inch, 854 x 480-pixel LCD

OS: Android 7.1.1 Nougat (system compatibility through Android R)



RUGGED SOLUTIONS FOR RUGGED ENVIRONMENTS.

Honeywell vehicle-mounted computers are built to meet the daily challenges and demanding work environments of warehouses and distribution centers. They serve the needs of supply chain operations of all sizes. Thor devices have rugged designs that minimize downtime and maintenance costs in the toughest environments.



THE THOR FAMILY OUTPERFORMS IN ANY ENVIRONMENT.



VM1A

WHAT IT IS

The VM1A, built on the Android and Mobility Edge platform, is a rugged vehiclemounted computer built tough to handle harsh warehouses, ports and intermodal and manufacturing environments. Best option if you want to upgrade to a more visual modern interface.

KEY SPECIFICATIONS

- Cold storage option
- Resistive and capacitive touch panels
- IP Rating: IP66
- MIL-STD-810F vibration and SAE-J1455 shock rated
- NFC: Integrated Near Field Communication

HOW IT WORKS

- Smart Dock allows movement of units between vehicles to save cost and reduce downtime
- Ignition control makes the computer ready for work whenever the user is ready
- Field-replaceable touchscreen and keyboard assemblies for reduced downtime
- The powerful Qualcomm 660 processor, integrated keyboard and 2x2 MIMO WLAN communications keep workers connected and productive
- Integrated keyboard
- Versatile display options: indoor, outdoor, defroster resistive or capacitive; optional screen blanking
- Software Client Pack and Device Client
- Pack included for easy deployment, security and productivity with prelicensed software including Enterprise Browser, Launcher
- Smart Terminal Emulation with built-in session persistence and more

Display: 8-inch WXGA

OS: Android 8 (Oreo), upgradable through Android R





VM3

WHAT IT IS

The VM3 is designed for the toughest distribution center environments, manufacturing facilities, and freight operations. It's the industry's most capable full-size vehicle-mounted mobile computer. It can be deployed in multiple application environments—from dry goods to cold storage, indoor or outdoor, in-premise or in intermodal facilities.

KEY SPECIFICATIONS

- Cold storage option
- IP Rating: IP66
- MIL-STD-810F vibration and SAE-J1455 crash rated

HOW IT WORKS

- Smart Dock, field-replaceable front panel and ignition control ensure reduced investment in spare pool and maintenance costs
- Versatile display options: indoor, outdoor, defroster, resistive or capacitive; optional screen blanking

Display: 12.1-inch

OS: Windows Embedded Compact 7, Windows Embedded Standard 7, Windows 7, Windows 10, WWAN 4G, GSM + CDMA w/GPS



CONSISTENT SOLUTIONS FOR CONSISTENT WORKFLOWS.

From desktop to industrial to mobile, Honeywell printers are the clear choice for a wide variety of labeling applications. The built-in “smarts” of our industrial printers mean greater efficiency and lower cost, with wired and wireless solutions for all high-demand printing needs. Our desktop printers are quiet, compact, intuitive and reliable – with a range of configurations designed to excel in your business environment. Our mobile printers are built to withstand punishing field conditions, enabling a full day of printing without recharging. Having more printer uptime can reduce the total cost of ownership.



FIXED PRINTERS ARE YOUR TRUSTED ALLIES.



PC SERIES

WHAT IT IS

Desktop label printers PC43T, PC43D and PC23D for low-volume printing applications (max. 1,000 labels/day).

APPLICATIONS

Ideal for T&L, warehouse, healthcare and retail applications.

HOW IT WORKS

- Direct Thermal and Thermal Transfer models
- 2-inch and 4-inch print width models
- Color LCD or icon interface options

KEY SPECIFICATIONS

- **USB connectivity: Standard**
- **Optional internal Ethernet, Parallel, Serial, Wi-Fi, Bluetooth®**
- **Optional label dispenser, cutter and linerless, as well as battery base for mobile applications (PC43d only)**
- **Smart printing**



PM SERIES

WHAT IT IS

The PM Series comprises industrial label printers for up to 7,000 labels a day.

APPLICATIONS

Ideal for the heavy-duty shipping label, warehouse and manufacturing applications.

HOW IT WORKS

- Compact versions for space-constrained applications
- 2-inch and 4-inch print width models
- Touchscreen and icon interface options

KEY SPECIFICATIONS

- **Internal Ethernet and USB connectivity: Standard**
- **Optional Wi-Fi, Bluetooth, Serial, Parallel**
- **Label dispenser, cutter, full roll rewriter options**
- **Smart printing**
- **Printer languages: DPL**





MP SERIES

WHAT IT IS

The MP Series contains industry's smallest all-metal rugged label printer. Rugged and easy-to-use MP Series printers do as much as large industrial printers but only need a fraction of the space. Featuring an all-metal casing that's ideal for harsh industrial environments, MP Series printers are quiet and small enough to operate in low noise environments, too, such as an office or hospital.

APPLICATIONS

Ideal for warehouse and distribution center environments.

HOW IT WORKS

- MP Compact: Available 4-inch wide, Direct Thermal only, wireless connectivity
- MP Nova: Available 4-inch or 6-inch wide, Direct Thermal or Thermal Transfer
- Easy Media Loading: No need to open the printer to load media
- Large media capacity

KEY SPECIFICATIONS

- **MP Compact Mobile: Withstands vibration and supports 24–48V DC (optional mounting kits available)**
- **Supports PL-Z, PL-I and PL-B emulations on the DPL version of MP Compact4 Mark II**
- **Standard Connectivity: Serial/USB/Ethernet; optional connectivity (MP Compact): Wireless 802.11 b/g**





RPE SERIES

WHAT IT IS

The RPe series comprises a durable mobile receipt and label printers for workers on the go. These portable printers provide big productivity gains and reduce errors by enabling workers to print labels at the location where they need to be applied when they need to be applied. Unlike other mobile printers on the market, the RP4e printer offers almost 2X the print speed media capacity, a one-point ANSI print quality improvement, and superior battery power longevity with our new Hi-drain battery – ensuring smooth, continuous operation so your workers can work efficiently with less media reloading, battery swaps and downtime.

APPLICATIONS

DSD, field service, eCitation, T&L, retail and airline applications.

HOW IT WORKS

- 2-in and 4-in print width models
- High-discharge current lithium-ion cell battery can be swapped without resetting the printer or losing connectivity

KEY SPECIFICATIONS

- **802.11 a/b/g/n/ac; wireless access modes; Infrastructure and ad hoc**
- **USB 2.0: Includes On-The-Go (OTG) capabilities for scanner, scale and keyboard input**
- **NFC: For pairing and retrieving configuration and diagnostic information**
- **Bluetooth: Bluetooth 4.0 + LE dual radio mode; serial port profile, security modes 1-4, encryption 1-3e, Apple iOS compatible**
- **Remote Management: monitor and manage printers; NETiraMD: mobiledevicemanagement utility for smart mobile devices; AirWatch Mobile**
- **Drop Spec: Ultra-rugged: survives 2-m (6.6 ft.) drops and 1,000 0.5-m (1.6 ft.) tumbles**
- **Dust and Rain Resistance: IP542; with optional environmental case**





PX940

WHAT IT IS

Developed for companies that are subjected to fines levied for non-compliance to regulatory standards, and returned shipments due to unreadable barcodes, the PX940 series prints barcodes that are defect-free and 100 percent accurate every time. With integrated label verification technology and Operational Intelligence software, the PX940 industrial printer gives customers error-free printing, predictive analytics and a lower overall cost of ownership.

HOW IT WORKS

- Integrated label verification technology checks and ensures that label printing is accurate every time; instantly notifies you of pass/fail status and ANSI grade
- Extremely precise printing of up to +/-0.2 mm (0.012 in) virtually eliminates poor quality, unreadable labels and barcodes
- Operational Intelligence software provides predictive analytics and data on printer health to help managers oversee their entire printer fleet and proactively prevent issues, ensuring maximum uptime.
- Virtually no setup, no training and no new barcode setup
- Easy to use and maintain, with a color multilingual touchscreen interface, quick sideloading design and a built-in printhead cleaning routine that provides optimal print quality and a longer printhead life

KEY SPECIFICATIONS

- **Standard: USB 2.0 Host (x2), USB 2.0 Device**
- **256 MB Flash memory**
- **1 GB DDR3 SDRAM**
- **Multi-GB USB memory device (FAT16/FAT32)**

APPLICATIONS

Suited for applications that are regulated or require high precision and error-free printing, such as transportation and logistics, pharmaceuticals and healthcare, shipping and distribution centers, industrial manufacturing, automotive parts suppliers and retail vendors.



INDUSTRIAL SOLUTIONS FOR INDUSTRIAL DEMANDS.

State-of-the-art scanning systems are a necessity for today's distribution centers and their mobile workforce. Throughout Honeywell's years of innovation in the industry we serve, we've developed a variety of scanners to meet your every need and to help you achieve better outcomes.

ULTRA-RELIABLE INDUSTRIAL AND WEARABLE SCANNERS.

Even in challenging working environments, you can trust our handheld, industrial-grade barcode scanners to provide superior durability and reliability. Our scanners are encased in waterproof and dustproof housings and rubberized to reduce damage from falls or tumbles, providing a long life cycle and low cost of ownership. Our scanners are perfect for fastpaced, high-volume barcode scanning.





GRANIT 1910i / 1911i

WHAT IT IS

Adaptus 6.0 imaging technology and decoding architecture provides industrial-grade scan performance for the Granit 1910i/1911i.

HOW IT WORKS

- Corded or Bluetooth wireless connectivity options
- Reading Distance: 0 cm–75 cm
- Motion Tolerance: Up to 610 cm/s for 13 mil UPC

KEY SPECIFICATIONS

- **Class-leading durability:** IP65-rated housing can withstand 5,000 tumbles and survive 50 drops from 2 m at -30°C (corded)
- **Environmental Sealing:** IP65
- **3-year warranty**



GRANIT 1980i / 1981i

WHAT IT IS

The Granit 1980i corded full scanner and the Granit 1981i cordless full-range scanner have class-leading depth of field. The devices scan virtually all 1D and 2D barcodes “fullrange” – from near contact to more than 16 meters away.

HOW IT WORKS

- Set the gold standard for scanner reliability, surviving 5,000 tumbles
- Environmental Sealing: IP65
- 3-year warranty

KEY SPECIFICATIONS

- **Class-leading readability: Scans poor-quality and damaged barcodes down to 3 mils**
- **Granit Durability:**
 - Optimized to perform in extreme use cases, with incredible drop and tumble ratings
 - Corded or Bluetooth wireless connectivity options
- **Reading Distance: over 15 m**
- **Motion Tolerance: 76 cm/s**



8670 RING SCANNER

WHAT IT IS

When paired with a VMT or mobile device, the 8670 Ring Scanner is a hands-free device, with excellent scanperformance and best-in-class motion tolerance.

HOW IT WORKS

- Ergonomic and rugged design
- Clean and comfortable use
- Reading Distance: 3.6 cm –41 cm
- Motion Tolerance: Up to 584 cm/s for 13 mil UPC

KEY SPECIFICATIONS

- Environmental sealing: IP54
- 3-year warranty



8680I WEARABLE MINI MOBILE COMPUTER

WHAT IT IS

The 8680i Wearable Mini Mobile Computer is a cost-efficient solution driving enhanced productivity through a direct wireless connection to the host and interactive display.

HOW IT WORKS

- One-piece hands-free device, with excellent scan performance and best-in-class motion tolerance
- Rugged and Versatile Design: easy to switch from ring or glove version
- Reading Distance: 0.5 cm –53 cm (EAN)
- Motion Tolerance: Up to 584 cm/s

KEY SPECIFICATIONS

- Interactive display
- Wi-Fi, Bluetooth (4.1 and LE), NFC communication protocols
- Environmental sealing: IP54
- 2-year warranty





FUTURE-PROOF SERVICES FOR FUTURE-PROOF BUSINESS.

Honeywell as-a-Service (HaaS) is a monthly payment plan to acquire software, hardware, and services. The plan simplifies the way you acquire and manage the life cycle of critical assets. Get in touch to find out how HaaS could be of benefit to your operation.





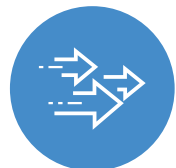
MOBILITY EDGE™

Mobility Edge is Honeywell's unified hardware and software platform for mobile computing. Mobility Edge future-proofs all devices to ensure seamless integration now and into the future. Only Mobility Edge guarantees support through Android R, giving you the longest security life cycle in the industry. When you take control of your mobile device management with Mobility Edge, you'll be positioned to drive business agility faster, better, more cost-effectively and with less risk. Only with Honeywell's Mobility Edge can you, the customer, be confident that you have the longest, most secured mobile device life cycle in the industry— something other vendors just can't say.





MOBILITY EDGE MEANS BUSINESS. UNLEASH YOUR POWER AND POTENTIAL.



Accelerate deployments:

Validate once. Deploy everywhere. Faster, easier, and at a lower cost. Enabling versatile out-of-the-box capabilities and a rapid provisioning suite, Mobility Edge expedites development, certification, setup and training involving multiple form factors at once.



Optimize business performance:

Boost productivity and drive efficiency. Powerful, embedded tools across the platform drive faster data capture and secure, enhanced worker communications. The unified, intuitive experience facilitates user adoption and helps employees complete vital tasks.



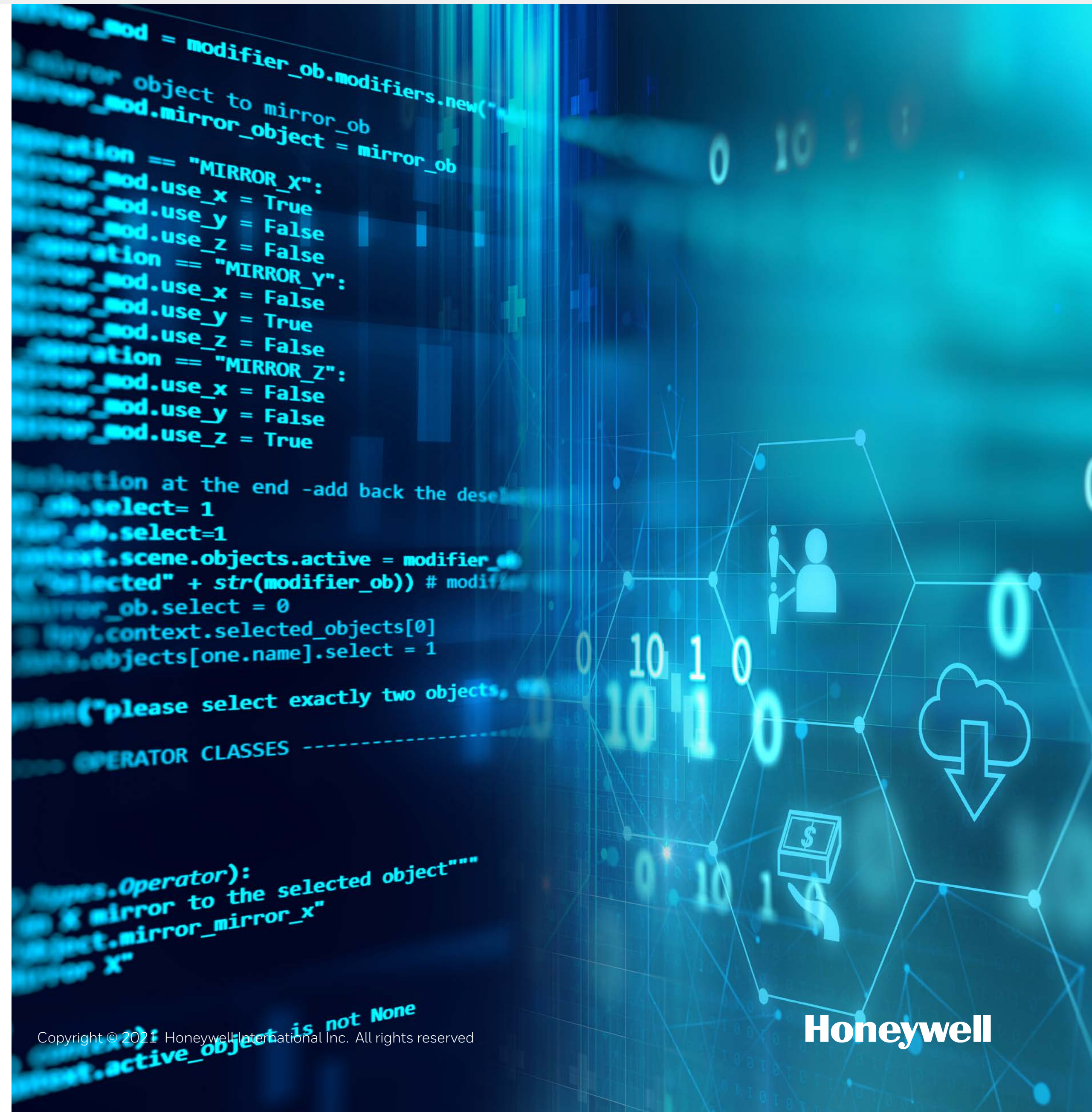
Extend life cycle:

Forward-compatible. Future-proof. Mobility Edge reduces TCO and minimizes headaches with an enterprise-wide approach to patch releases and hardware designed to support twice the operating system upgrades—through Android R—as competitors' products.



Strengthen security:

Mobility Edge is designed to unleash you from the burdens of fragmented mobile computing. How? By providing a unified, dynamic hardware-and-software platform that offers an agile approach to enabling enterprise IT to deliver better mobile solutions across your business.





OPERATIONAL INTELLIGENCE ONE PLATFORM TO MONITOR VALUABLE IT ASSETS

Operational Intelligence is a cloud-based software solution that solves this problem. It gives you actionable insights through the real-time tracking and analytics of the IT devices powering the front or back house of your supply chain.





For more information

www.sps.honeywell.com

Honeywell Safety and Productivity Solutions

300 S Tryon St Suite 500

Charlotte, NC 28202

800-582-4263

www.honeywell.com

DC Solutions Best Sellers eBook | Rev A | 09/21
©2021 Honeywell International Inc.

Honeywell