

CK65/CK3X/CK3R

MOBILE

COMPUTER

Accessories Guide



BATTERY TERMINAL
50014020 - 002
EA
27000
PKF Bin: 1 10005475301

Honeywell

TABLE OF CONTENTS

- 1 [Docks and Modules](#)
- 2 [Holsters and Handles](#)
- 3 [Batteries](#)
[Chargers](#)
[Cables](#)
- 4 [Power Supplies and Adapters](#)
- 5 [Replacement Parts](#)
[Snap-On Adapters](#)
- 6 [Flex Dock Supplies](#)

DOCKS AND MODULES



871-228-201

Single Dock, Standard

Accommodates one device and one battery. Not for US customers. Requires power supply 851-061-502 and country-specific AC power cord. Supports Single Dock Ethernet Module, 871-238-012.

The battery bay is not compatible with CK7X battery (318-046-031).



871-228-301

Single Dock, US Only

Accommodates one device and one battery. US customers only. Requires level VI power supply 851-810-002 and US AC power cord. Supports Single Dock Ethernet Module, 871-238-012.

The battery bay is not compatible with CK7X battery (318-046-031).



871-229-202

Ethernet Multi-Dock, Standard

Accommodates up to four (4) devices. Not for US customers. Requires global power supply 851-064-416 and country-specific AC power cord. Provides extra port allowing for ability to link up to three (3) multi-docks.



871-229-302

Ethernet Multi-Dock, US Only

Accommodates up to four (4) devices. US customers only. Requires global power supply 851-064-416 and US AC power cord. Provides extra port allowing for ability to link up to three (3) multi-docks.



871-229-201

Charge Only, Multi-Dock, Standard

Accommodates up to four (4) devices. Not for US customers. Requires global power supply 851-064-416 and country-specific AC power cord.



871-229-301

Charge Only, Multi-Dock, US Only

Accommodates up to four (4) devices. US customers only. Requires global power supply 851-064-416 and US AC power cord. Supports CK65/CK3X/CK3R.



871-231-102

Vehicle Dock

Securely holds CK65/CK3X/CK3R and provides power. Cabled RS-232 (5 V power on pin 9) or USB Host support is also available.

Requires use of Honeywell RS-232 serial cable 225-737-002 or Honeywell USB cable VE011-2016. The CK65/CK3X/CK3R Series vehicle dock uses the same mounting system (805-611-001) and vehicle power kits (203-802-002).



871-236-001

Vehicle Holder

Securely holds CK65, CK3X, and CK3R.



871-238-012

Single Dock, Ethernet Module

Interfaces with USB host connector on Single Dock.

HOLSTERS AND HANDLES



815-087-001

Standard Belt Holster – without Scan Handle

CK65/CK3X/CK3R rugged lightweight holster with belt designed for use with handheld applications without scan handle.



815-088-001

Standard Belt Holster – with Scan Handle

CK65/CK3X/CK3R rugged lightweight holster with belt designed for use with handheld applications with scan handle.



203-879-003

Scan Handle

Customer-installable scan handle (replaces the hand strap) that supports the CK65, CK3X, and CK3R.



213-063-001

Kit, Rubber Protective Boot

For CK65 computer with EX20 scan engine. **Use with or without handle.** Not compatible with CK3X/CK3R.



213-064-001

Kit, Rubber Protective Boot

For CK65 computer with 6703 and 6803 scan engines. **Use with or without handle.** Not compatible with CK3X/CK3R.



203-988-001

Kit, Protective Boot

Rubber boot for CK3R, charcoal color. Use with or without handle. Not compatible with holster, vehicle dock, or snap-on adapters. Not compatible with CK65/CK3X.



203-989-001

Kit, Protective Boot

Rubber boot for CK3X, charcoal color. Use with or without handle. Not compatible with holster, vehicle dock, or snap-on adapters. Not compatible with CK3R/CK65.

BATTERIES



318-033-021

Standard Capacity Battery Pack

One (1) standard rechargeable 7.4 watt hours (2000 mAh) battery. CK3R ships with one (1) battery. Compatible with CK65/CK3R/CK3X.



318-063-001

Extended Capacity Battery Pack

One (1) extended rechargeable 25.2 watt hours (7000 mAh) battery pack. CK65 ships with one (1) battery. Compatible with CK65.



318-034-033

Extended Capacity Battery Pack

One (1) extended rechargeable 18.5 watt hours (5000 mAh) battery pack. CK3X ships with one (1) battery. Compatible with CK65/CK3X/CK3R.



318-046-031

Extended Capacity "Smart" Battery Pack

One (1) standard rechargeable 18.5 watt hours (5200 mAh). Supports CK65/CK3X/CK3R. Cannot be charged in the Quad Battery Charger or the battery bay of Single Dock.



318-063-002

Cold Storage Battery Pack

One (1) extended rechargeable 18.5 watt hours (5200 mAh) battery pack optimized for Cold Storage environments. CK65 Cold Storage models ship with one (1) battery. Only compatible with CK65 Cold Storage models.

CHARGERS



871-230-101

Quad Battery Charger, Standard

Accommodates up to four (4) battery packs. Not for US customers. Requires power supply 851-061-502 and country-specific AC power cord. Not compatible with CK7X battery (318-046-031).



871-230-301

Quad Battery Charger, US Only

Accommodates up to four (4) battery packs. US customers only. Requires level VI power supply 851-810-002 and US AC power cord. Not compatible with CK7X battery (318-046-031).



CBL-500-120-S00-03

USB Type A to Micro USB, 1.2 m

Charging and USB communication cable, USB Type A to Micro USB, 1.2 m (3.9 ft).



236-297-001

USB Charging and Communications Cable

Use with CK65/CK3X/CK3R for USB connection and for ActiveSync (ActiveSync for Windows® Mobile and USB communication for CK65 Android™ device) and/or direct charging without the need for a dock or adapter (note charge times will be longer). Not compatible with CK3B.



CBL-015-250-C00

Granit Dock Cable

Use with CK65 and Vehicle Dock to connect Granit™ scanner.

CABLES

POWER SUPPLIES AND ADAPTERS



203-990-001

Wall Power Supply, Standard

Wall Power Supply except China and US. Use with CK65/CK3X/CK3R; plugs directly into the heel for charging. Ships with interchangeable country plugs except China.



203-990-002

Wall Power Supply, US Only

US-only Wall Power Supply. Use with CK65/CK3X/CK3R; plugs directly into the heel for charging. CEC compliant.



213-045-001

Wall Power Supply, China Only

China-only Wall Power Supply. Use with CK65/CK3X/CK3R; plugs directly into the heel for charging.



851-064-416

Universal Power Supply, 12V DC Output

Use with multi-docks (871-229-201, 871-229-202, 871-229-301, and 871-229-302). Order country-specific AC power cord separately.



851-061-502

Power Supply for Non-US Customers, 12V DC/30 W Output

Use with single dock (871-228-201) or quad battery charger (871-230-101). Order country-specific AC power cord separately. Not for US customers.



851-810-002

Level VI Power Supply, US Only, 12V DC/30 W Output

Use with single dock (871-228-301) or quad battery charger (871-230-301). US customers only.



851-065-315

Power Supply for Rest of World, except North America and LATAM, 12V DC/18 W Output

Use with 850-817-002 power snap-on adapter.



851-811-001

Power Supply for North America and LATAM, 12V DC/18 W Output

Use with 850-817-002 power snap-on adapter.

REPLACEMENT PARTS



CN80-STY-5SH

Stylus Replacement Kit

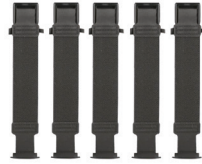
Contains five (5) sets of stylus and coiled tether for CK65. Not compatible with CK3X/CK3R.



203-986-001

Stylus Replacement Kit

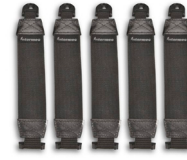
Contains five (5) sets of stylus and coiled tether for CK65/CK3X/CK3R. Not compatible with CK3B.



8754-870650-01

Hand Strap Replacement Kit

Contain five (5) sets of hand straps for CK65, including mounting hardware. Not compatible with CK3X/CK3R.



203-987-002

Hand Strap Replacement Kit

Contains five (5) sets of hand straps for CK3X/CK3R. Includes mounting hardware.



346-065-101

Screen Cleaner Kit, Pre-Moist Wipes

Includes 24 pre-moistened, non-abrasive, non-streaking 10.2 cm x 17.8 cm (4 in x 7 in) wipes.

346-069-107

Screen Protector, 10 Pack

Contains 10 self-adhesive screen protectors for CK3X/CK3R.

213-065-001

Glass Screen Protector Kit, 5 Pack

Contains five (5) self-adhesive glass screen protectors for CK65. Not compatible with CK3X/CK3R.

SNAP-ON ADAPTERS



850-817-002

Power Snap-On Adapter

Recommended for in-field charging solutions not requiring vehicle dock. Supports use of AC power supply 851-065-315 (Rest of World, except North America and LATAM). Power supply 851-811-001 for North America and LATAM only.



850-815-002

RS-232 Snap-On Adapter

Use with CK3R only. Not for use with CK3X/CK65.

FLEX DOCK SUPPLIES



DX4A1444410

Quad Dock – Ethernet

Accommodates four mobile computers. Includes power supply, North American power cord. Features 100Base-T Ethernet connectivity; provides two RJ45 jacks for upstream connections and downstream “daisy-chain” connections of up to 10 docks.



DX4A1444400

Quad Dock – Ethernet

Accommodates four mobile computers. Includes power supply. Order power cord separately. Features 100Base-T Ethernet connectivity; provides two RJ45 jacks for upstream connections and downstream “daisy-chain” connections of up to 10 docks.



DX4A2444410

Quad Dock – Charge Only

Accommodates four mobile computers – CHARGE ONLY. Includes power supply and North American power cord.



DX4A2444400

Quad Dock – Charge Only

Accommodates four mobile computers – CHARGE ONLY. Includes power supply. Order power cord separately.



203-917-001

FlexDock Cup for Battery Pack

FlexDock Cup for battery pack supporting CK65/CK3/CK70/CK71/CK75. Need to order FlexDock Base Desktop (852-920-002) separately.



203-916-001

FlexDock Cup for Mobile Computer

FlexDock Cup for mobile computer supporting CK65/CK3. Need to order FlexDock Base Desktop (852-920-002) separately.



DX2A2BB10

4-Position Battery Charger

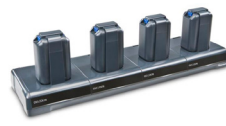
Includes two auxiliary pack charge cups, capable of supporting four battery packs. Includes power supply and North American power cord.



DX2A2BB20

4-Position Battery Charger

Includes two auxiliary pack charge cups, capable of supporting four battery packs. Includes power supply. Order power cord separately.



DX4A2BBBB10

8-Position Battery Charger

Includes four auxiliary pack charge cups, capable of supporting eight battery packs. Includes power supply and North American power cord.



DX4A2BBBB00

8-Position Battery Charger

Includes four auxiliary pack charge cups, capable of supporting eight battery packs. Includes power supply. Order power cord separately.

For more information

www.honeywellaidc.com

Honeywell Safety and Productivity Solutions

9680 Old Baires Road
Fort Mill, SC 29707
www.honeywell.com

Android is a trademark or registered trademark of Google LLC.
Windows is a trademark or registered trademark of Microsoft Corporation.
Granit is a trademark or registered trademark of Honeywell International Inc.
All other trademarks are the property of their respective owners.

CK65/CK3X/CK3R Mobile Computer Accessories Guide | Rev D | 11/19
© 2019 Honeywell International Inc.

