

# Manageable, scalable and flexible cloud-based monitoring



**EATON**

*Powering Business Worldwide*



# Remote monitoring simplified

Eaton's Tripp Lite series cloud-connected UPS systems are manageable, scalable and flexible solutions for battery backup, surge protection and cloud-based remote monitoring. Whether a deployment includes a single UPS or an entire fleet, remote management using a mobile app or web browser saves the time, hassle and expense of frequent on-site visits.

From home networks to retail kiosks, Tripp Lite series cloud-connected UPS systems enable uninterrupted operation for a wide range of devices in diverse environments.

**There is a cloud-connected UPS for every environment.**



Retail



Home office



Corporate office



Education



Manufacturing

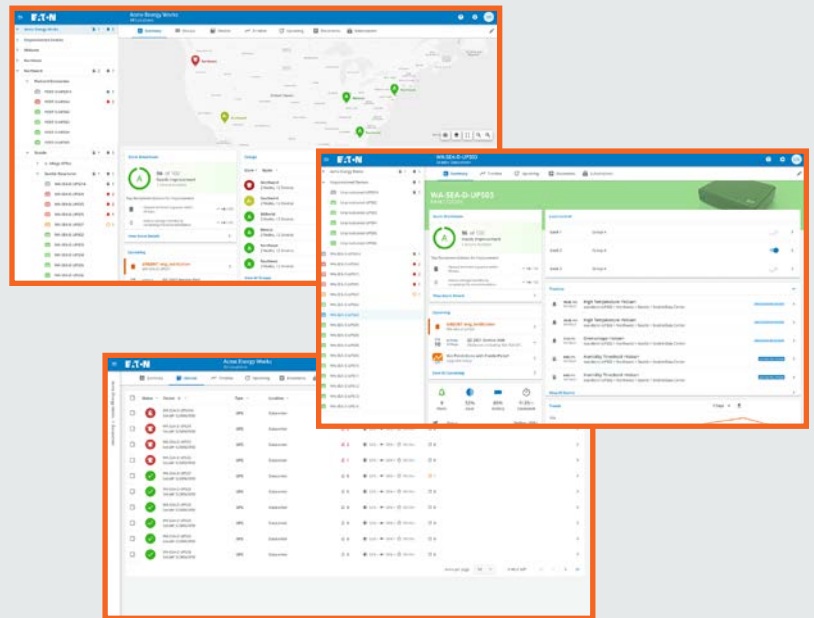
# Easy-to-use cloud-based remote monitoring

Great for IT pros and non-experts alike, Tripp Lite series cloud-connected UPS systems include remote monitoring software with an intuitive dashboard that is accessible from a mobile app or web browser. The ability to monitor, control and manage large deployments from a remote location helps reduce the number of on-site visits, saving time and money. A near-field communication (NFC) area on the UPS facilitates easy transfer of network settings from an app-enabled mobile device.

Powered by  
**Brightlayer**

## Free remote monitoring software

Eaton's cloud-based remote monitoring dashboard offers convenient setup, control and management of a single UPS or a larger deployment. Receive alerts, push configurations, silence alarms or control outlet banks using a mobile app or web browser.



### Ethernet communication port

Connect the UPS to a network with an Ethernet cable. Built-in cloud connectivity removes the need for additional hardware, saving space and equipment costs.



### Easy setup and commissioning

Scan the QR code on the UPS to download the remote monitoring app on a mobile device. Set up an account and scan the QR code to seamlessly add the UPS to your account. For access on a desktop computer, use the provided web address.

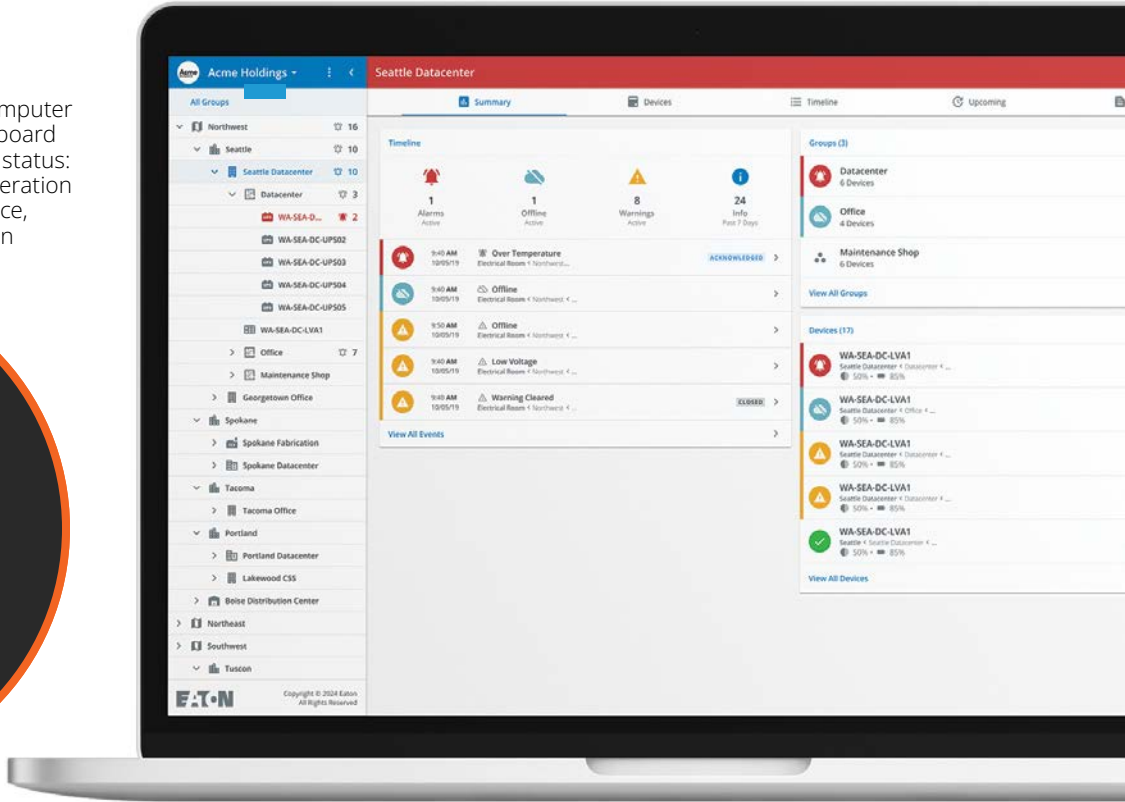
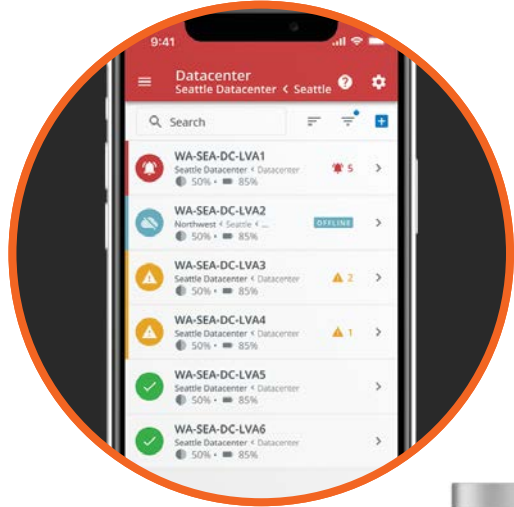


### NFC capability

Configure network settings using the mobile app, tap the NFC (near-field communication) area on the UPS with your mobile device and push your custom settings to the UPS. Configure once and push settings to as many UPS systems as needed.

# Remote monitoring dashboard

Accessible via mobile device or desktop computer web browser, the simple color-coded dashboard provides a quick visual indication of device status: alerts (red), warnings (yellow) or normal operation (green). Alerts can be sent to a mobile device, providing early awareness of issues that can cause downtime.



# Cloud-connected UPS features

Eaton Tripp Lite series UPS systems provide reliable battery backup and power protection. Cloud connectivity enables efficient setup, deployment and management of multiple UPS systems across multiple locations.

## Network-grade power protection

These UPS systems maintain usable 120V nominal output to connected electronics during severe brownouts and overvoltages. Additionally, UPS systems filter potentially disruptive line noise and safeguard connected devices from the harmful effects of power surges.

## Reliable battery backup

Battery backup keeps connected equipment running during short outages and provides time to save data and shut down devices in case of a longer outage.

## Controllable outlets

Control outlets remotely to reboot unresponsive equipment and minimize the need for on-site visits.

## Hardened construction

A protective conformal coating and wide operating temperature range allow placement in demanding locations, such as industrial environments.

## LCD (select models)

Multifunctional LCD provides information about UPS functions and warnings about battery or power issues.

## Extendable battery runtime (select models)

Connect optional external battery packs to provide extra backup runtime.

## Lithium-ion batteries (select models)

With a life of 8 to 10 years, lithium-ion batteries provide a set-it-and-forget-it solution.

## Hot-swappable batteries (select models)

Batteries can be replaced or added without shutting down the entire system, providing uninterrupted power to connected devices.

## High efficiency

Efficient UPS systems help reduce energy costs.

## Pure sine wave output (select models)

Pure sine wave output in battery mode provides maximum stability and compatibility with sensitive equipment.

## Certified to meet UL standards

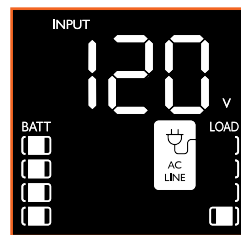
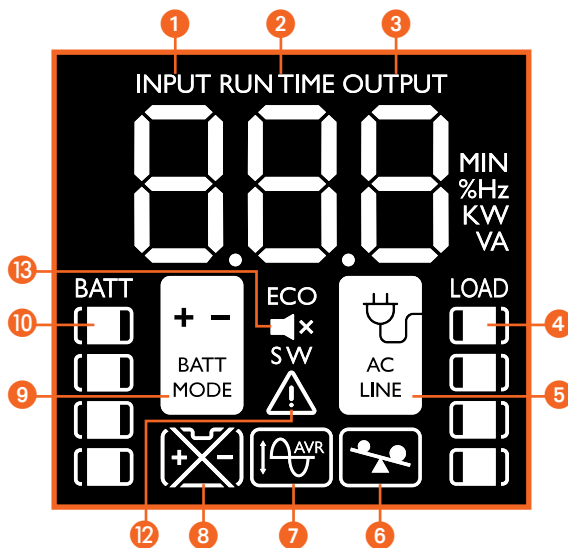
These UPS systems are certified to meet UL and other applicable safety standards.

# Multifunctional LCD shows power conditions for easy on-site monitoring

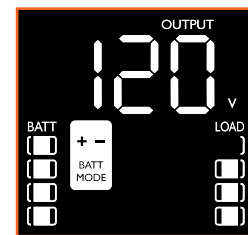
Advanced front-panel LCD screens available on rack, rack/tower and tower UPS models enable easy on-site monitoring of power conditions. The intuitive interface also makes it simple to change UPS settings.

## LCD (Rack/tower and pure sine wave tower)

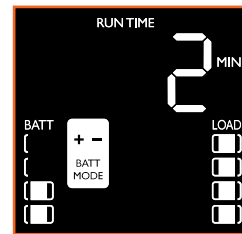
UPS startup (all segments shown)



Line mode – input voltage



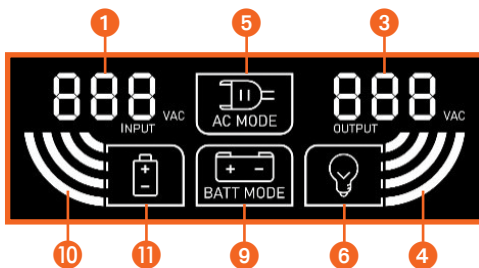
Battery mode – output voltage



Battery mode – runtime

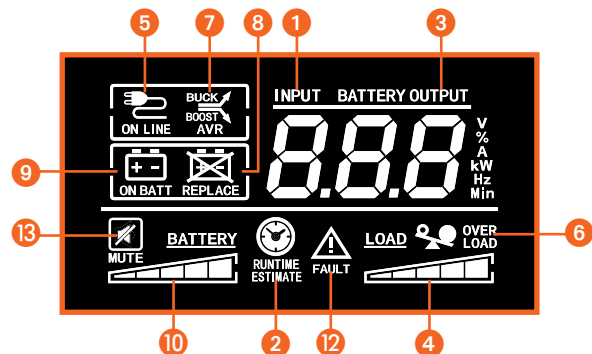
## LCD (1U rack)

UPS startup (all segments shown)



## LCD (Tower)

UPS startup (all segments shown)



- 1 Input voltage
- 2 Estimated runtime
- 3 Output voltage
- 4 Current/load level
- 5 AC line (normal) mode
- 6 Overload
- 7 AVR in use
- 8 Replace battery
- 9 Battery in use
- 10 Battery level
- 11 Charging mode
- 12 Fault
- 13 Mute

# Desktop UPS systems (Standby)

Easy-to-use standby UPS systems have a compact housing for placement flexibility.

- 350 VA, 600 VA and 850 VA models with up to 5 outlets
- Versatile mounting options: desktop placement, wall or monitor mounting via keyhole slots or shelf or pole mounting via cable tie attachment points
- All ports and outlets are on the same side for easy access
- Automatic restart after outages reduces the need for on-site visits
- **Best for:** Computing, networking and point-of-sale equipment in retail, kiosks, food service and light industrial environments; home routers and modems



## SPECIFICATIONS

	BC350RNC	BC600RNC	BC850RNC
UPS type	Standby	Standby	Standby
<b>Output</b>			
Output capacity (VA/Watts)	350 VA/210 W	600 VA/300 W	850 VA/450 W
Nominal output voltage details	120V	120V	120V
Frequency compatibility	50 or 60 Hz follows the AC input frequency. Battery cold start is 60 Hz only.		
Output AC waveform (AC line mode)	Sine wave		
Output AC waveform (battery mode)	Modified sine wave		
Output receptacles	(3) NEMA 5-15R (surge + battery backup)	(4) NEMA 5-15R (surge + battery backup)	(5) NEMA 5-15R (surge + battery backup)
<b>Input</b>			
Nominal input voltage	120V	120V	120V
Input voltage range for main operations (max adjustable range)	95–145 VAC High line set 145V +/- 5%; High line reset 140V +/- 5%; Low line set 95V +/- 5%; Low line reset 100V +/- 5%		
Input frequency	50 or 60 Hz +/- 3 Hz (default 60 Hz)		
Input connection	NEMA 5-15P, 5 ft. cord		
<b>Batteries and runtime</b>			
Battery type	Sealed, maintenance-free, lead-acid		
Backup runtime* - full/half load	2 min./7 min.	1.2 min./5 min.	1.7 min./8 min.
<b>Communication and management</b>			
Cloud-based monitoring	Yes		
Interface ports	Ethernet port allows the UPS to be managed via a network connection. NFC commissioning allows easy transfer of network settings to the UPS. USB-C port enables configuration by command line interface (CLI).		
Audible alarm	Yes	Yes	Yes
<b>Protection characteristics</b>			
UPS AC suppression rating	190 joules		
UPS AC suppression response time	Instantaneous		
Overload protection	Line mode: 110%, enters fault after 5 minutes; 120%, enters fault immediately Battery mode: 110%, shuts down in 5 seconds; 120%, shuts down immediately		
<b>Physical</b>			
Cabinet type	Flatpack - all ports/outlets on same side		
Cabinet material	Plastic	Plastic	Plastic
Battery door	Yes	Yes	Yes
Dimensions (H x W x D)	2.28 x 10.04 x 7.09 in. (58 x 255 x 180 mm)		3.15 x 11.02 x 7.09 in. (80 x 280 x 180 mm)
Net weight	4.6 lb. (2.1 kg)	4.8 lb. (2.2 kg)	7 lb. (3.2 kg)
<b>Environment</b>			
Humidity	0-95% RH @ 32 to 104 °F (0 to 40 °C) (non-condensing)		
Storage temp./Operating temp.	5 to 122 °F (-15 to 50 °C) / 32 to 122 °F (0 to 50 °C)		
<b>Standards and compliance</b>			
Regulatory	CAN/CSA-C22.2 No. 107.3 (Canada); ICES (Canada); NOM (Mexico); UL 1778		
Compliance	ENERGY STAR; ROHS; FCC Class B; DOE; CEC		
Warranty	2-year limited warranty		

Due to continuous improvement programs, specifications are subject to change without notice. \* Runtime varies with load, battery age and other factors.

# Desktop UPS systems (Line-interactive)

Line-interactive operation regulates voltage without draining battery power.

- 750 VA UPS with 12 outlets to offer protection for more equipment
- Compact housing for desktop placement or wall mounting
- Automatic voltage regulation (AVR) corrects abnormal voltage conditions without using the battery, increasing battery lifespan and keeping the battery fully charged for outages
- **Best for:** Computers, routers, printers, HDTVs, game consoles, ATMs, security systems and digital signage equipment



## SPECIFICATIONS

AVR750UNC	
UPS type	Line-interactive
<b>Output</b>	
Output capacity (VA/Watts)	750 VA/450 W
Nominal output voltage details	120V
Frequency compatibility	50 or 60 Hz follows the AC input frequency. Battery cold start is 60 Hz only.
Output AC waveform (AC line mode)	Sine wave
Output AC waveform (battery mode)	Modified sine wave
Output receptacles	(6) NEMA 5-15R (surge only) + (6) NEMA 5-15R (surge + battery backup) with two switched load banks of 2 outlets
<b>Input</b>	
Nominal input voltage	120V
Input voltage range for main operations (max adjustable range)	89–145 VAC High line set 145V +/- 5%; High line reset 142V +/- 5%; Low line set 89V +/- 5%; Low line reset 92V +/- 5%
Input frequency	50 or 60 Hz +/- 5 Hz (default 60 Hz)
Input connection	NEMA 5-15P, 5 ft. cord
<b>Batteries and runtime</b>	
Battery type	Sealed, maintenance-free, lead-acid
Backup runtime*- full/half load	3 min./11 min.
<b>Communication and management</b>	
Cloud-based monitoring	Yes
Interface ports	Ethernet port allows the UPS to be managed via a network connection. NFC commissioning allows easy transfer of network settings to the UPS. USB-C port enables configuration by command line interface (CLI).
Audible alarm	Yes
<b>Protection characteristics</b>	
UPS AC suppression rating	316 joules
UPS AC suppression response time	Instantaneous
Overload protection	Line mode: 110% ±10%, enters fault after 5 minutes; 120% ±10%, enters fault immediately Battery mode: 110% ±10%, shuts down in 5 seconds; 120% ±10%, shuts down immediately
<b>Physical</b>	
Cabinet type	Flatpack
Cabinet material	Plastic
Battery door	Yes
Dimensions (H x W x D)	4.14 x 7.48 x 12 in. (105 x 190 x 305 mm)
Net weight	15.82 lb. (7.2 kg)
<b>Environment</b>	
Humidity	0-95% RH @ 32 to 104 °F (0 to 40 °C) (non-condensing)
Storage temp./Operating temp.	5 to 122 °F (-15 to 50 °C) / 32 to 122 °F (0 to 50 °C)
<b>Standards and compliance</b>	
Regulatory	CAN/CSA-C22.2 No. 107.3 (Canada); ICES (Canada); NOM (Mexico); UL 1778
Compliance	ENERGY STAR; ROHS; FCC Class B; DOE; CEC
Warranty	2-year limited warranty

Due to continuous improvement programs, specifications are subject to change without notice. \* Runtime varies with load, battery age and other factors.

# 1U rack lithium-ion UPS systems

With double the service life of comparable lead-acid batteries, lithium-ion batteries make these UPS systems a set-it-and-forget-it solution.



- 500 VA, 1000 VA and 1500 VA standby models with 6 outlets
- 1U rack mounting or desktop placement
- Front-panel LCD enables setup and local monitoring
- **Best for:** High-end desktop, media center, retail point of sale, critical devices, VoIP networks

## SPECIFICATIONS

	BC500RT1ULNC	BC1000RT1ULNC	BC1500RT1ULNC
UPS type	Standby	Standby	Standby
<b>Output</b>			
Output capacity (VA/Watts)	500 VA/400 W	1000 VA/750 W	1500 VA/1050 W
Nominal output voltage details	120V	120V	120V
Frequency compatibility	50 or 60 Hz follows the AC input frequency. Battery cold start is 60 Hz only.		
Output AC waveform (AC line mode)	Sine wave		
Output AC waveform (battery mode)	Modified sine wave		
Output receptacles	(6) NEMA 5-15R (surge + battery backup) with four switched outlet groups: (2) main 5-15R outlets; (4) controllable 5-15R outlets	(6) NEMA 5-15R (surge + battery backup) with four switched outlet groups: (2) main 5-15R outlets; (4) controllable 5-15R outlets	(6) NEMA 5-15R (surge + battery backup) with four switched outlet groups: (2) main 5-15R outlets; (4) controllable 5-15R outlets
<b>Input</b>			
Nominal input voltage	120V	120V	120V
Input voltage range for main operations (max adjustable range)	89–145 VAC High line set 145V +/- 5%; High line reset 140V +/- 5%; Low line set 89V +/- 5%; Low line reset 92V +/- 5%		
Input frequency	50 or 60 Hz +/- 3 Hz (default 60 Hz)		
Input connection	NEMA 5-15P, 5 ft. cord		
<b>Batteries and runtime</b>			
Battery type	Lithium-ion	Lithium-ion	Lithium-ion
Backup runtime* - full/half load	1.5 min./8 min.	1.5 min./8 min.	1.5 min./8 min.
DC system voltage (VDC)	12V	24V	36V
<b>Indicators and switches</b>			
LCD screen	Yes (White text on black)	Yes (White text on black)	Yes (White text on black)
LED quantity	2	2	2
LED functions (color)	Green (solid): line mode Green (flashing): battery mode Red: fault	Green (solid): line mode Green (flashing): battery mode Red: fault	Green (solid): line mode Green (flashing): battery mode Red: fault
Switch functions (type)	On/Off, press for more than 4 seconds to enter or release mute	On/Off, press for more than 4 seconds to enter or release mute	On/Off, press for more than 4 seconds to enter or release mute
Alarms (function)	Power failure, low battery and overload	Power failure, low battery and overload	Power failure, low battery and overload
Mute/Silent option	Yes/Yes	Yes/Yes	Yes/Yes
<b>Communication and management</b>			
Cloud-based monitoring	Yes		
Interface ports	Ethernet port allows the UPS to be managed via a network connection. NFC commissioning allows easy transfer of network settings to the UPS. USB-C port enables configuration by command line interface (CLI).		
Audible alarm	Yes	Yes	Yes
<b>Protection characteristics</b>			
UPS AC suppression rating	190 joules		
UPS AC suppression response time	Instantaneous		
Overload protection	Line mode: 110%, enters fault after 5 minutes; 120%, shuts down and enters fault immediately. Battery mode: 110%, shuts down in 5 seconds; 120%, shuts down immediately.		
<b>Physical</b>			
Cabinet type	1U rack-mount	1U rack-mount	1U rack-mount
Cabinet material	Plastic	Plastic	Plastic
Battery door	Yes	Yes	Yes
Dimensions (H x W x D)	1.73 x 17.24 x 8.26 in. (44 x 438 x 210 mm)	1.73 x 17.24 x 12.40 in. (44 x 438 x 315 mm)	1.73 x 17.24 x 12.40 in. (44 x 438 x 315 mm)
Net weight	5.51 lb. (2.5 kg)	6.61 lb. (3 kg)	8.81 lb. (4 kg)
<b>Environment</b>			
Humidity	0-95% RH @ 32 to 104 °F (0 to 40 °C) (non-condensing)		
Storage temp./Operating temp.	5 to 122 °F (-15 to 50 °C) / 32 to 122 °F (0 to 50 °C)		
<b>Standards and compliance</b>			
Regulatory	CAN/CSA-C22.2 No. 107.3 (Canada); ICES (Canada); NOM (Mexico); UL 1778		
Compliance	ENERGY STAR; ROHS; FCC Class B; DOE; CEC		
Warranty	2-year limited warranty		

Due to continuous improvement programs, specifications are subject to change without notice. \* Runtime varies with load, battery age and other factors.



# 2U rack/tower UPS systems

Automatic voltage regulation (AVR) corrects abnormal voltage conditions without draining battery power, ensuring battery backup is available if needed.

- 750 VA, 1000 VA and 1500 VA line-interactive models with up to 10 outlets
- 2U rack mounting or desktop placement (tower or horizontal)
- Front-panel LCD enables setup and local monitoring
- **Best for:** Servers (including VoIP), storage, networking equipment, switches (including PoE) and other IT equipment



## SPECIFICATIONS

	SMART750LCDNC	SMART1000LCDNC	SMART1500CDXNC
UPS type	Line-interactive	Line-interactive	Line-interactive
<b>Output</b>			
Output capacity (VA/Watts)	750 VA/475 W	1000 VA/750 W	1500 VA/1050 W
Nominal output voltage details	120V	120V	120V
Frequency compatibility	50 or 60 Hz follows the AC input frequency. Battery cold start is 60 Hz only.		
Output AC waveform (AC line mode)	Sine wave		
Output AC waveform (battery mode)	Modified sine wave		
Output receptacles	(8) NEMA 5-15R (surge + battery backup) Load Bank 1: 3 outlets; Load Bank 2: 3 outlets; Load Bank 3: 2 outlets	(10) NEMA 5-15R (surge + battery backup) Load Bank 1: 3 outlets; Load Bank 2: 3 outlets Load Bank 3: 4 outlets	(10) NEMA 5-15R (surge + battery backup) Load Bank 1: 3 outlets; Load Bank 2: 3 outlets Load Bank 3: 4 outlets
<b>Input</b>			
Nominal input voltage	120V	120V	120V
Input voltage range for main operations (max adjustable range)	97–145 VAC High line set 145V +/- 5%; High line reset 140V +/- 5%; Low line set 89V +/- 5%; Low line reset 92V +/- 5%		
Input frequency	50 or 60 Hz +/- 3 Hz (default 60 Hz)		
Input connection	NEMA 5-15P, 5 ft. cord		
<b>Batteries and runtime</b>			
Battery type	Sealed, maintenance-free, lead-acid	Sealed, maintenance-free, lead-acid	Sealed, maintenance-free, lead-acid
Backup runtime* - full/half load	1 min./7 min.	2 min./7 min.	2 min. (6 min. 40s with external battery)/10 min.
DC system voltage (VDC)	12V	12V	24V
Hot swappable	Yes	Yes	Yes
<b>Indicators and switches</b>			
LCD screen	Yes (White text on black, rotatable)	Yes (White text on black, rotatable)	Yes (White text on black, rotatable)
LED quantity	2	2	2
LED functions (color)	Green: line mode Red: fault	Green: line mode Red: fault	Green: line mode Red: fault
Switch functions (type)	2 buttons (Power, Mute/Test)	2 buttons (Power, Mute/Test)	2 buttons (Power, Mute/Test)
Alarms (function)	Power failure, low battery and overload	Power failure, low battery and overload	Power failure, low battery and overload
Mute/Silent option	Yes/Yes	Yes/Yes	Yes/Yes
<b>Communication and management</b>			
Cloud-based monitoring	Yes		
Interface ports	Ethernet port allows the UPS to be managed via a network connection. NFC commissioning allows easy transfer of network settings to the UPS. USB-C port enables configuration by command line interface (CLI).		
Audible alarm	Yes	Yes	Yes
<b>Protection characteristics</b>			
UPS AC suppression rating	158 joules		
UPS AC suppression response time	Instantaneous		
Overload protection	Line mode: 110%, enters fault after 5 minutes; 120%, shuts down and enters fault immediately. Battery mode: 110%, shuts down in 5 seconds; 120%, shuts down immediately.		
<b>Physical</b>			
Cabinet type	2U rack/tower	2U rack/tower	2U rack/tower
Cabinet material	Plastic	Plastic	Plastic
Battery door	Yes	Yes	Yes
Dimensions (H x W x D)	3.5 x 17.24 x 8.26 in. (89 x 438 x 210 mm)	3.5 x 17.24 x 8.26 in. (89 x 438 x 210 mm)	3.5 x 17.24 x 10.5 in. (89 x 438 x 267 mm)
Net weight	16.53 lb. (7.5 kg)	23.14 lb. (10.5 kg)	28.66 lb. (13 kg)
<b>Environment</b>			
Humidity	0-95% RH @ 32 to 104 °F (0 to 40 °C) (non-condensing)		
Storage temp./Operating temp.	5 to 122 °F (-15 to 50 °C) / 32 to 122 °F (0 to 50 °C)		
<b>Standards and compliance</b>			
Regulatory	CAN/CSA-C22.2 No. 107.3 (Canada); ICES (Canada); NOM (Mexico); UL 1778		
Compliance	ENERGY STAR; ROHS; FCC Class B; DOE; CEC		
Warranty	2-year limited warranty		

Due to continuous improvement programs, specifications are subject to change without notice. \* Runtime varies with load, battery age and other factors.

# Tower UPS systems

Automatic voltage regulation (AVR) corrects abnormal voltage conditions without draining battery power, ensuring battery backup is available if needed.



- 750 VA, 1000 VA and 1500 VA line-interactive models with 10 outlets
- Desktop placement or wall mounting
- Front-panel LCD enables setup and local monitoring
- **Best for:** Home/office desktop, audio/video, high-end desktop, small network, retail point of sale

## SPECIFICATIONS

	SMART750LCDTNC	SMART1000LCDTNC	SMART1500LCDTNC
UPS type	Line-interactive	Line-interactive	Line-interactive
<b>Output</b>			
Output capacity (VA/Watts)	750 VA/500 W	1000 VA/600 W	1500 VA/1000 W
Nominal output voltage details	120V	120V	120V
Frequency compatibility	50 or 60 Hz follows the AC input frequency. Battery cold start is 60 Hz only.		
Output AC waveform (AC line mode)	Sine wave		
Output AC waveform (battery mode)	Modified sine wave		
Output receptacles	(5) NEMA 5-15R (surge + battery backup) with two switched outlet groups: (1) main NEMA 5-15R; (4) switched NEMA 5-15R		
<b>Input</b>			
Nominal input voltage	120V	120V	120V
Input voltage range for main operations (max adjustable range)	89–145 VAC High line set 145V +/- 5%; High line reset 140V +/- 5%; Low line set 89V +/- 5%; Low line reset 92V +/- 5%		
Input frequency	50 or 60 Hz +/- 3 Hz (default 60 Hz)		
Input connection	NEMA 5-15P, 5 ft. cord		
<b>Batteries and runtime</b>			
Battery type	Sealed, maintenance-free, lead-acid		
Backup runtime* - full/half load	2.2 min./8.3 min.	4 min./14.3 min.	2 min. (8 min. 40s with external battery)/10 min.
DC system voltage (VDC)	12V	24V	24V
<b>Indicators and switches</b>			
LCD screen	Yes (White text on black)	Yes (White text on black)	Yes (White text on black)
LED quantity	2	2	2
LED functions (color)	Green: line mode Red: fault	Green: line mode Red: fault	Green: line mode Red: fault
Switch functions (type)	Test, Mute	Test, Mute	Test, Mute
Alarms (function)	Power failure, low battery and overload	Power failure, low battery and overload	Power failure, low battery and overload
Alarm default	Temporary mute	Temporary mute	Temporary mute
Mute/Silent option	Yes/Yes	Yes/Yes	Yes/Yes
<b>Communication and management</b>			
Cloud-based monitoring	Yes		
Interface ports	Ethernet port allows the UPS to be managed via a network connection. NFC commissioning allows easy transfer of network settings to the UPS. USB-C port enables configuration by command line interface (CLI).		
Audible alarm	Yes	Yes	Yes
<b>Protection characteristics</b>			
UPS AC suppression rating	190 joules		
UPS AC suppression response time	Instantaneous		
Overload protection	Line mode: 110%, enters fault after 5 minutes; 120%, shuts down and enters fault immediately. Battery mode: 110% shuts down in 5 seconds; 120% shuts down immediately.		
<b>Physical</b>			
Cabinet type	Tower	Tower	Tower
Cabinet material	Plastic	Plastic	Plastic
Battery door	Yes	Yes	Yes
Dimensions (H x W x D)	8.07 x 5.75 x 15.63 in. (205 x 146 x 397 mm)	8.07 x 5.75 x 15.63 in. (205 x 146 x 397 mm)	8.07 x 5.75 x 15.63 in. (205 x 146 x 397 mm)
Net weight	17.64 lb. (8 kg)	22.92 lb. (10.4 kg)	28.66 lb. (13 kg)
<b>Environment</b>			
Humidity	0-95% RH @ 32 to 104 °F (0 to 40 °C) (non-condensing)		
Storage temp./Operating temp.	5 to 122 °F (-15 to 50 °C) / 32 to 122 °F (0 to 50 °C)		
<b>Standards and compliance</b>			
Regulatory	CAN/CSA-C22.2 No. 107.3 (Canada); ICES (Canada); NOM (Mexico); UL 1778		
Compliance	ENERGY STAR; ROHS; FCC Class B; DOE; CEC		
Warranty	2-year limited warranty		

Due to continuous improvement programs, specifications are subject to change without notice. \* Runtime varies with load, battery age and other factors.

# Pure sine wave tower UPS systems

In battery mode, these UPS systems provide pure sine wave output for maximum compatibility with sensitive electronics.

- 750 VA, 1000 VA and 1500 VA line-interactive models with 10 outlets
- Desktop placement or optional rack mounting
- Pure sine wave output in battery mode provides maximum stability and compatibility with sensitive equipment
- Front-panel LCD enables setup and local monitoring
- **Best for:** Large or small network, high-end desktop, computer room, small business



## SPECIFICATIONS

	SMART750PSRTNC	SMART1000PSRTNC	SMART1500PSRTNC
UPS type	Line-interactive	Line-interactive	Line-interactive
<b>Output</b>			
Output capacity (VA/Watts)	750 VA/475 W	1000 VA/750 W	1500 VA/1050 W
Nominal output voltage details	120V	120V	120V
Frequency compatibility	50 or 60 Hz follows the AC input frequency. Battery cold start is 60 Hz only.		
Output AC waveform (AC line mode)	Sine wave		
Output AC waveform (battery mode)	Pure sine wave		
Output receptacles	(10) NEMA 5-15R (surge + battery backup) Load bank 1: 2 outlets, Load bank 2: 2 outlets, Load bank 3: 4 outlets	(10) NEMA 5-15R (surge + battery backup) Load bank 1: 2 outlets, Load bank 2: 2 outlets, Load bank 3: 4 outlets	(10) NEMA 5-15R (surge + battery backup) Load bank 1: 2 outlets, Load bank 2: 2 outlets, Load bank 3: 4 outlets
<b>Input</b>			
Nominal input voltage	120V	120V	120V
Input voltage range for main operations (max adjustable range)	89–145 VAC High line set 145V +/- 5%; High line reset 140V +/- 5%; Low line set 89V +/- 5%; Low line reset 92V +/- 5%		
Input frequency	50 or 60 Hz +/- 3 Hz (default 60 Hz)		
Input connection	NEMA 5-15P, 5 ft. cord		
<b>Batteries and runtime</b>			
Battery type	Sealed, maintenance-free, lead-acid		
Backup runtime*- full/half load	2 min./8 min.	2 min./10 min.	2.5 min./8 min.
DC system voltage (VDC)	12V	24V	24V
Hot swappable	Yes	Yes	Yes
<b>Indicators and switches</b>			
LCD screen	Yes (White text on black, rotatable)	Yes (White text on black, rotatable)	Yes (White text on black, rotatable)
LED quantity	2	2	2
LED functions (color)	Green: line mode; Red: fault	Green: line mode; Red: fault	Green: line mode; Red: fault
Switch functions (type)	2 buttons (Power, Mute/Test)	2 buttons (Power, Mute/Test)	2 buttons (Power, Mute/Test)
Alarms (function)	Power failure, low battery and overload	Power failure, low battery and overload	Power failure, low battery and overload
Mute/Silent option	Yes/Yes	Yes/Yes	Yes/Yes
<b>Communication and management</b>			
Cloud-based monitoring	Yes		
Interface ports	Ethernet port allows the UPS to be managed via a network connection. NFC commissioning allows easy transfer of network settings to the UPS. USB-C port enables configuration by command line interface (CLI).		
Audible alarm	Yes	Yes	Yes
<b>Protection characteristics</b>			
UPS AC suppression rating	158 joules		
UPS AC suppression response time	Instantaneous		
Overload protection	Line mode: 110%, enters fault after 5 minutes; 120%, shuts down and enters fault immediately. Battery mode: 110%, shuts down in 5 seconds; 120%, shuts down immediately.		
<b>Physical</b>			
Cabinet type	Tower (rack-mount kit sold separately)	Tower (rack-mount kit sold separately)	Tower (rack-mount kit sold separately)
Cabinet material	Plastic	Plastic	Plastic
Battery door	Yes	Yes	Yes
Dimensions (H x W x D)	12.40 x 3.38 x 12.99 in. (315 x 86 x 330 mm)	12.40 x 3.38 x 15.35 in. (315 x 86 x 390 mm)	12.40 x 3.38 x 15.35 in. (315 x 86 x 390 mm)
Net weight	18.5 lb. (8.4 kg)	28.2 lb. (12.8 kg)	33.06 lb. (15 kg)
<b>Environment</b>			
Humidity	0-95% RH @ 32 to 104 °F (0 to 40 °C) (non-condensing)		
Storage temp./Operating temp.	5 to 122 °F (-15 to 50 °C) / 32 to 122 °F (0 to 50 °C)		
<b>Standards and compliance</b>			
Regulatory	CAN/CSA-C22.2 No. 107.3 (Canada); ICES (Canada); NOM (Mexico); UL 1778		
Compliance	ENERGY STAR; ROHS; FCC Class B; DOE; CEC		
Warranty	2-year limited warranty		

Due to continuous improvement programs, specifications are subject to change without notice. \* Runtime varies with load, battery age and other factors.



We make what matters work. \*

\* At Eaton, we believe that power is a fundamental part of just about everything people do. Technology, transportation, energy and infrastructure—these are things the world relies on every day. That's why Eaton is dedicated to helping our customers find new ways to manage electrical and mechanical power more efficiently, safely and sustainably. To improve people's lives, the communities where we live and work, and the planet our future generations depend upon. Because that's what really matters. And we're here to make sure it works.

See more at [Eaton.com/whatmatters](https://www.eaton.com/whatmatters)

For more information, scan the QR code or contact your Eaton sales representative.



**Eaton**  
1000 Eaton Boulevard  
Cleveland, OH 44122  
United States  
[Eaton.com](https://www.eaton.com)

© 2023 Eaton  
All Rights Reserved  
Printed in USA  
Publication No. BR153179EN / 23-09-232  
December 2023

Eaton is a registered trademark.  
All other trademarks are property of their respective owners.

Follow us on social media to get the latest product and support information.

